

DECOY

for

soprano sax

english horn

bassoon

piano

vibraphone

glock

susp. cymbals

gongs

by

DANIEL MOSES SCHREIER

3/74

© 1974 dan moSES music

decoy

daniel mores schreier

PIANO

VIBRAPHONE

FAST ♩ = 160

TENOR TOM TOM
BASS TOM TOM

GLOCK.

DEEP SUSP. CYMB.

ff 3 sffz

ped. L.V.

mf

ff

stop suddenly

soft m.

mp

molto cres.

ff

mute immediately to gong

Three staves of musical notation for strings. The top two staves are in treble clef, and the bottom staff is in bass clef. Each staff contains a melodic line with slurs and accents. The first measure of each staff has a '2' above it, indicating a second. Dynamics include 'sfz' (sforzando) and 'ppp' (pianissimo).

Pn.

scrapped metal file on string inside

ped. Labau sfz

2/8

MODERATE ♩ = 120

2/8 FAST

VIBES.

sfz p mp

DEEP

p mp

SOPRANO SAXOPHONE

ENGLISH HORN

BASSOON

Pn.

sfz

ped

L. SWAN.

3

3

MODERATO

VIBES.

GONG

S. SAX. *sfz p* *mf* *sfz mp* *ff* *mp* *ff*

ENG. H. *p* *mf* *sfz* *mp* *ff* *(p)*

BSN. *sfz mp* *ff* *p* *(ff)*

3 *3* *3* *3* *3* *3* *3* *3* *3* *3*

slide *slide* *slide* *slide*

PN.

3/8

2/8

VIBES *f* *ff*

GONG *f* *f*

S. SAX

mf pp

E.H.

p mf pp

DN.

ff pp

* ossia (F) etc.

pn

ped. 1

f' blow etc.

FAST

2/8

VIBES

f p

GONG

p f

S.S.AX.

Handwritten musical notation for Saxophone (S.S.AX.) in treble clef. The staff contains a melodic line with a dynamic marking of *f* and a *sfz* marking. It features two triplet markings over eighth notes. The key signature has two sharps (F# and C#).

PN.

Handwritten musical notation for Piano (PN.) in grand staff. The right hand has a melodic line with slurs. The left hand has a rhythmic accompaniment with slurs. Below the staff, there are two large handwritten numbers: a '2' and a '3', likely indicating the number of notes in the slurred groups.

VIBES

Handwritten musical notation for Vibes in treble clef. The staff contains a rhythmic accompaniment with slurs and accents. The key signature has two sharps (F# and C#).

GONG

Handwritten musical notation for Gong in treble clef. The staff contains a rhythmic accompaniment with slurs and accents. The key signature has two sharps (F# and C#).

S. SAX.

PN.

VIBES

GONG

3

3

3

3

3

6

3

3

This page contains a handwritten musical score for four instruments: S. SAX., PN., VIBES, and GONG. The S. SAX. part is written on a single staff with a treble clef and contains several triplet markings (3) and a sextuplet (6). The PN. part consists of two staves with a grand staff clef, but it is mostly blank. The VIBES part is on a single staff with a treble clef and features three groups of notes, each with a slur underneath. The GONG part is on a single staff with a treble clef and has three notes, each with a slur underneath. There are also three empty staves at the bottom of the page.

SAX. *mf sf* 2 secs. slide

E.H. *mf sf* 2 secs. slide 3 3 3 5 3

BSN. *mf sf* 2 secs. 3

PN.

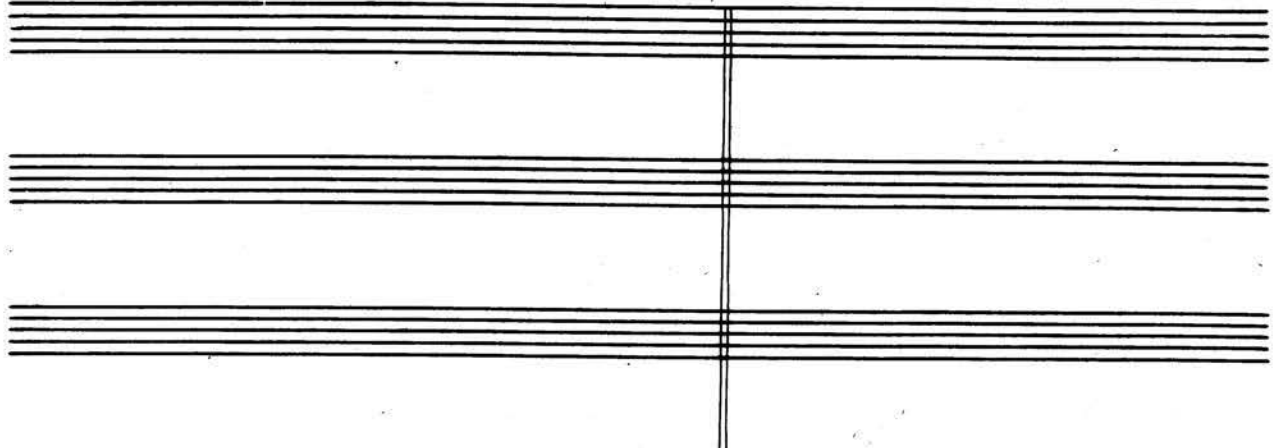
VIBES

DRUMS

Handwritten musical score for a percussion ensemble. The score is divided into two systems by a vertical dashed line. The instruments and their parts are as follows:

- S. SAX:** Treble clef, featuring a triplet of eighth notes in the first measure.
- E.H. (Euphonium):** Treble clef, featuring a triplet of eighth notes in the first measure, marked with *sf* (sforzando).
- BSN. (Bassoon):** Bass clef, featuring a triplet of eighth notes in the first measure, marked with *sf*.
- PN. (Percussion):** Treble and Bass clefs. The bass clef part includes a triplet of eighth notes and a triplet of sixteenth notes, both marked with *sf*. The treble clef part includes a triplet of eighth notes and a triplet of sixteenth notes, both marked with *sf*. A large number '3' is written vertically below the bass clef part.
- VIBES:** Treble clef, featuring a series of horizontal lines representing sustained vibrations.
- GLOCK. (Glockenspiel):** Treble clef, featuring a melodic line starting in the second measure, marked with *f*.
- SUPP. LYNG. (Supercymbal):** Treble clef, featuring a melodic line starting in the second measure, marked with *f*. A bracket indicates three dynamic levels: *High*, *Med*, and *Low*.
- GONG:** Treble clef, featuring a series of horizontal lines representing sustained vibrations.

The score is written on ten staves. The first system includes S. SAX, E.H., BSN., and PN. The second system includes VIBES, GLOCK., SUPP. LYNG., and GONG. The bottom of the page shows two empty staves.



Pr. {

AMPLIFY

100 seconds

A

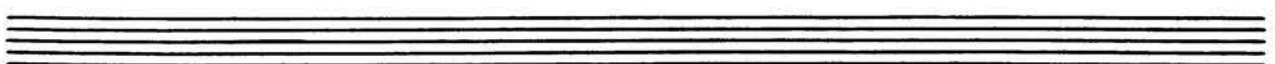
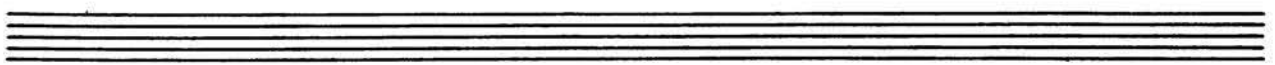
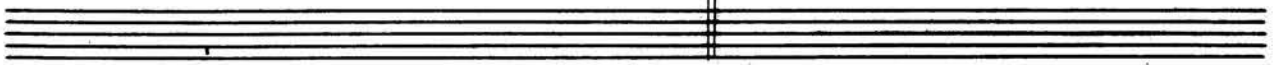
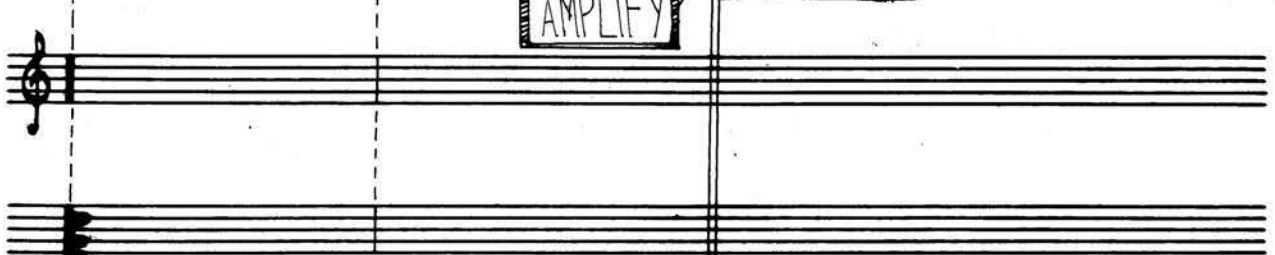
per second

VIBES

3

AMPLIFY

100 seconds



S.SAX. 12"

E.H. 15"

BSN. 5" 10"

P.N. 45" 40"

RELEASE GRADUALLY

B **C**

VIBES 15" 40"

GLOCK 12"

DEEP BONG. EVERY 14"

Detailed description: This is a page of a musical score for a percussion ensemble. It features seven staves. The top three staves are for S.SAX., E.H., and BSN. The next two staves are for P.N. (Percussion No. 1 and 2). Below these are staves for VIBES and GLOCK. At the bottom are two staves for DEEP BONG. The score includes various musical notations such as notes, rests, and dynamic markings. Key performance instructions include 'RELEASE GRADUALLY' and 'EVERY 14"'. Two large circled letters, 'B' and 'C', are placed below the P.N. staff, likely indicating specific sections or cues. Numerical markings (e.g., 12", 15", 45") are placed above or below notes, possibly indicating durations or specific techniques. The page number '12' is in the top right corner.

S.SAX

E.H.

BSN.

PVI.

VIBES

GLOCK

SMALL GONG

Annotations: 3", 17", 13", 20", 5", 5', 15", 15", 10", 11", 5', 35", 35", 15", every 11"

Large Circled Letters: D, E

Detailed description: This is a page of a musical score for a percussion ensemble. It features seven staves. The top three staves are for S.SAX, E.H., and BSN. The middle staff is for PVI. The bottom three staves are for VIBES, GLOCK, and SMALL GONG. The score is divided into two main sections by a vertical line. The first section contains various musical notations and time markers (e.g., 20", 5", 15", 15", 10", 11", 5"). The second section features large circled letters 'D' and 'E' on the PVI staff, and a 'SMALL GONG' staff with a 'every 11"' annotation. There are also several boxed-in musical phrases with time markers (e.g., 3", 13", 35", 15").

S.S. 5"

E.H. 13"

BN 12"

20"

10"

PN.



Vibes

Glock

10"

To VIBES (UPPER PART)

To GLOCK

8"

SM GONG

D. GONG

Handwritten musical score for percussion instruments. The score is organized into several systems of staves. The instruments listed are S.S., E.H., BSN., PN., VIBES, GLOCK, DEEP SUSP. CYMB., SM. GONG, and D. GONG. The score includes various rhythmic notations, dynamic markings, and time signatures such as 15'', 25'', 4'', 10'', and every 9''. A large circled 'F' is prominently displayed in the center of the page. The notation includes notes, rests, and specific markings like 'GLOCK' and 'DEEP SUSP. CYMB.'.

10"

S.S.

E.H.

BSN.

hold until next note

10"

11"

7"

6"

P.N.

20"



20"

3"

3"


VIBES.


GLOCK


DEEP SUSP


SM GONG



D. GONG

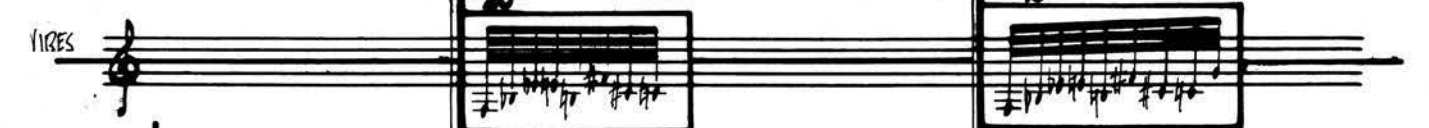
S.S. 


E.H. 


BSN. 

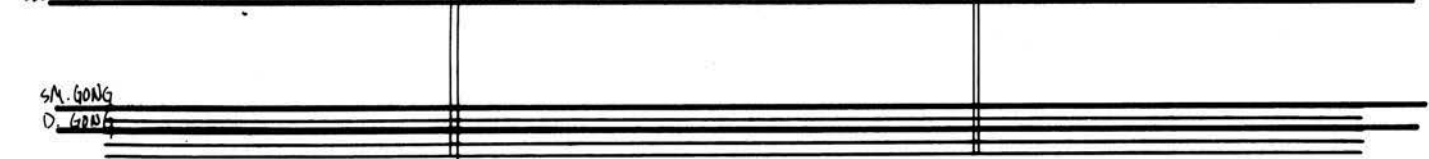
PR. 

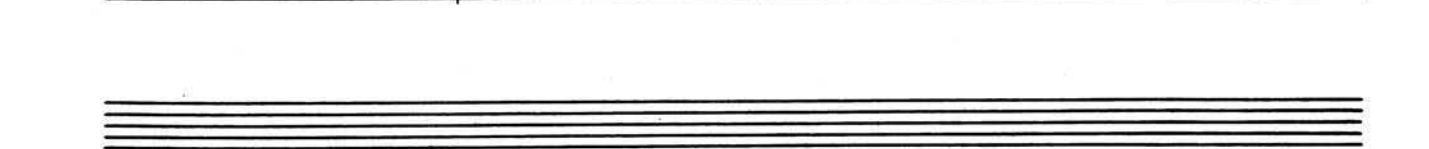
H  **I** 

VIBES 

GLOCK  TO UPPER PART OF VIBES

DEEP SUSP  MEDIUM SHAKE C.H.

SM. GONG 

D. GONG 

Handwritten musical score for percussion instruments. The score is organized into staves with the following labels on the left:

- S.S.
- E.H.
- BSW.
- PV. (with a brace grouping two staves)
- VIBES
- GLOCK
- M. SIZZLE
- DEEP CUSP
- SMALL GONG
- DEEP GONG

A large circled letter 'J' is positioned in the center of the score, serving as a section marker. The notation includes various rhythmic patterns and durations, with some measures enclosed in boxes and labeled with durations:

- 2"
- 4"
- 5"
- 15"
- Every 5"

Additional annotations include "SMALL SIZZLE CUSP" and "SMALL SIZZLE CUSP" written across the lower staves. The score is written on a system of five-line staves.

S.S.

E.H.

BSU.

PN.

K

VIBES

VIBES

S. SIZLE
M. SIZLE
D. SUSP

SM GONG
DEEP GONG

⊗ - PLAY **K** 8 TIMES

S.S.

E.H.

BSX.

PN.

VIBES

CLOCK

SM. SIZZLE
MED SIZZLE
DEEP SUBP.

SM. GONG
DEEP GONG

⊛ PLAY [L] FOUR TIMES

S.S.

E.H.

BSN.

PN.

VIBES

SM SIZZLE
MED SIZZLE
DEEP SISP

SHM GONG
DEEP GONG

S.S.



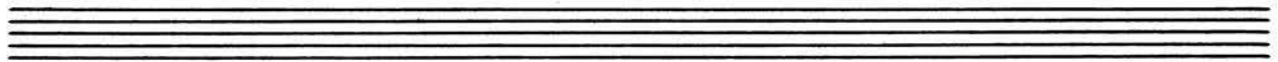
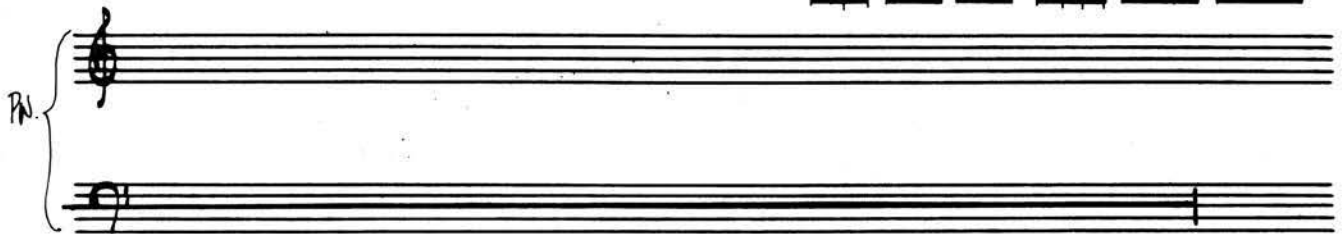
E.H.



B.S.



P.N.



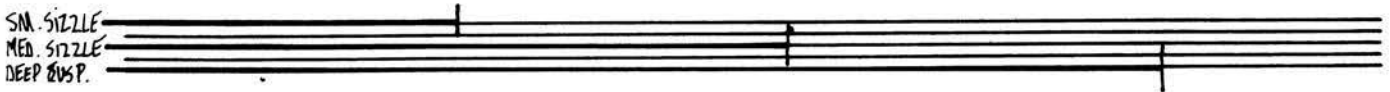
VIBES



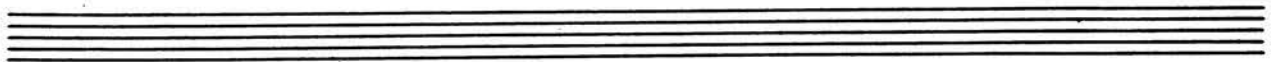
GLOCK



SM. SIZZLE
MED. SIZZLE
DEEP BUST.



SM. GONG
DEEP GONG



Handwritten musical score for S.S., E.H., BSNL, PN, VIRES, and CLOCK. The score includes a vertical line with measurements (12", 8", 15", 7") and a box containing musical notation and the instruction "L.V. till inaudible." with arrows pointing to the left.

(SIMULTANEOUS)

ANN ARBOR MI. MARCH 1974

Daniel Messer

DEEP GONG

Empty musical staves at the bottom of the page.